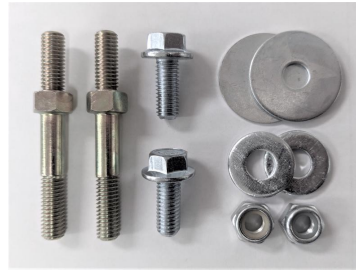


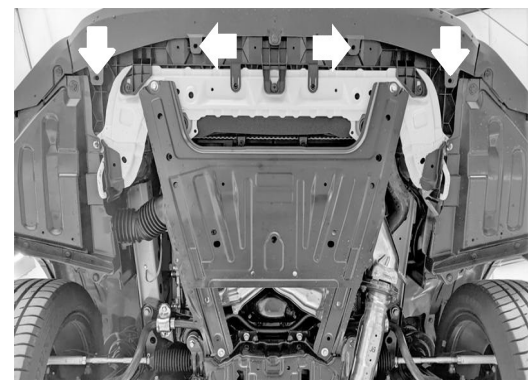
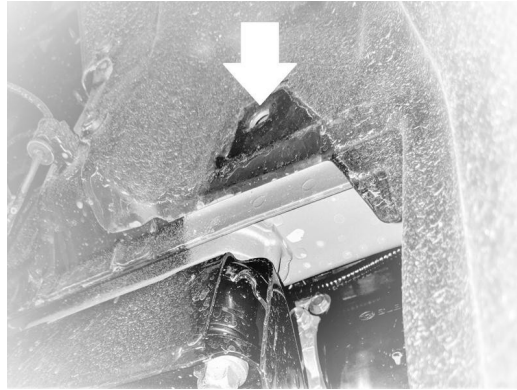
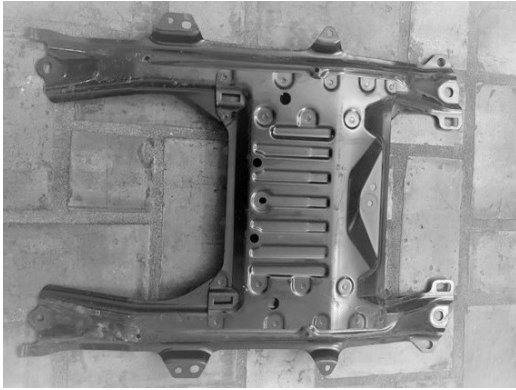
# Instructions for Mounting Primitive™ Front Skidplate for: 2022+ Subaru WRX

## Included Parts:

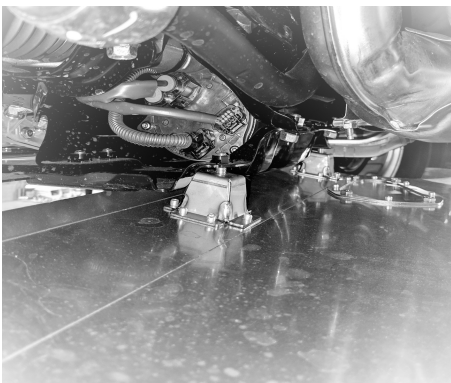
- ✓ 1x - Primitive Racing 2022+ WRX Front Skidplate
- ✓ 2x - M8-1.25x25mm JIS Flange Bolt
- ✓ 2x - 68mm double ended bolt (or “Stud”), gold
- ✓ 2x - large diameter “fender washer”
- ✓ 2x - small diameter washer
- ✓ 2x - M8 Nyloc nut



1. Remove packaging and any protective wrapping from the new Skidplate and do a quick inventory of the hardware and verify it matches this sheet, then raise the car securely on jack stands, ramps or a lift if you're fancy.
2. Remove the front plastic splash shield, it's attached with 10 large push clips 3 smaller clips and qty: 2 – 12mm headed bolts.
3. with the black plastic shielding off remove the “H-shaped” black steel longitudinal bracket that is above the plastic splash shield it is attached with qty: 4 – 12mm headed bolts (this bracket will not be reinstalled). You will need to re-install 6 of the plastic clips, Locations shown below, do this before moving onto the next step.



4. Thread two of the M8x25mm JIS Flange bolts into the rearward location where you removed two of the 12mm headed bolts that held the “H-shaped” black steel longitudinal bracket. Thread the bolts in about 3 turns.



5. With the front edge of the plate angled down position the slots in the rear mounting towers over the rear mounting bolts, this will allow the plate to be hooked over the mounting bolts and hang without the need to hold it up. Make sure to not pull forward on it too much or it will come off the bolt heads and fall down.

6. Push the front of the skidplate up to align the front studs in the factory mounting points, use the two remaining M8 nyloc nut to attach the skidplate. Tighten all 4 of the bolts down and torque them to 11-14 ft/lbs. If you live in an area where cars are prone to rusting some anti-seize is recommended.

