

Instructions for Mounting Primitive™ Front Skidplate for:

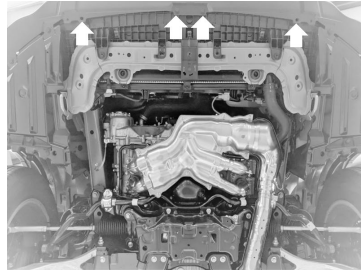
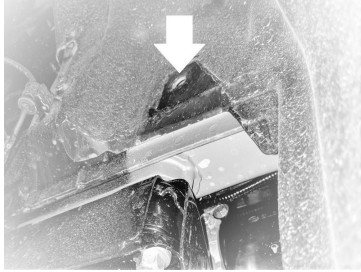
2020+ Subaru Outback 2.5L Non-Turbo

(See other side if your vehicle is the Turbo Model)

Included Parts:

- ✓ 1x - Primitive Racing 2020+ Outback Front Skidplate
- ✓ 4x - M8-1.25x20mm JIS Flange Bolt

1. Remove packaging and any protective wrapping from the new Skidplate and do a quick inventory of the hardware and verify it matches this sheet, then raise the car securely on jack stands, ramps or a lift if you're fancy.
2. Remove the front plastic splash shield, it's attached with 13 large push clips and qty: 4 – 12mm headed bolts, you will need to re-install 6 of the plastic clips, Locations shown below, do this before moving onto the next step. There is also a “clip receptacle” that needs to be removed, it is located in between the front mounting locations and needs to be rotated a 1/4 turn in a counter clockwise rotation to be removed.



3. Thread two of the M8x20mm JIS Flange bolts into the rearward location where you removed the shorter of the two 12mm headed bolts that held the stock splash shield onto the car, thread both of them in about 3 turns.
4. The forward two skidplate mounting holes are slightly closer together than the front two mounting locations that attach the front plastic splash shield and aren't used before the skidplate has been installed so the threads may be in need of cleaning, if the new bolts don't thread in easily they can be cleaned out with one or more of the following: an M8x1.25 tap or thread restorer, a wire brush type pipe cleaner, or if you don't have any of these things the bolts that attach the stock splash shield also work pretty well at cleaning out the threads.
5. With the front edge of the skidplate angled down, position the slots in the rear mounting towers over the rear mounting bolts, this will allow the plate to be hooked over the mounting bolts and hang without the need to hold it up. Make sure to not pull forward on it too much or it will come off the bolt heads and fall down.
6. Push the front of the skidplate up to align the front mounting towers with the factory mounting points, use the two remaining M8-1.25x20mm JIS Flange bolts to attach the skidplate. Tighten all 4 of the bolts down and torque them to 11-14 ft/lbs. If you live in an area where cars are prone to rusting some anti-seize is recommended.



www.get-primitive.com