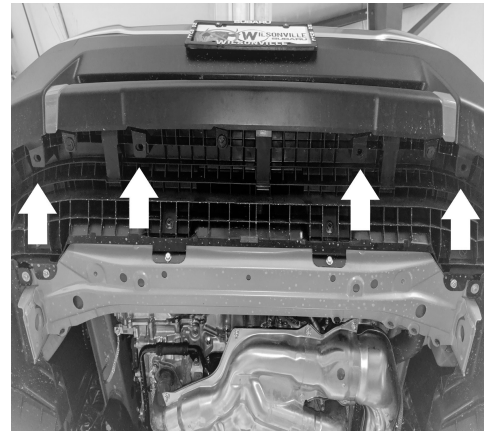
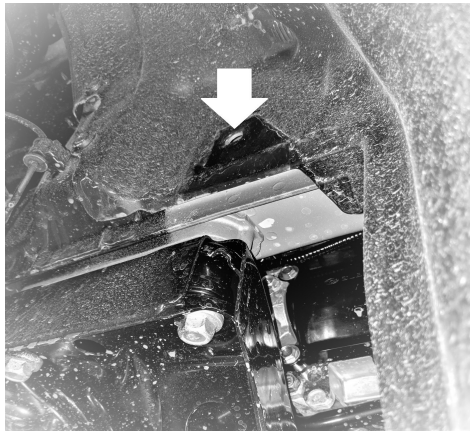
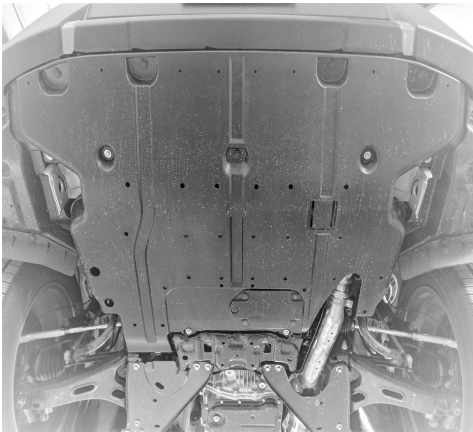


Instructions for Mounting Primitive™ Front Skidplate for: 2019+ Subaru Forester

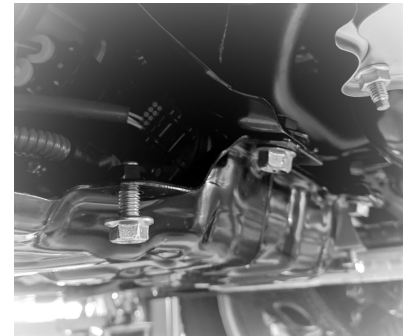
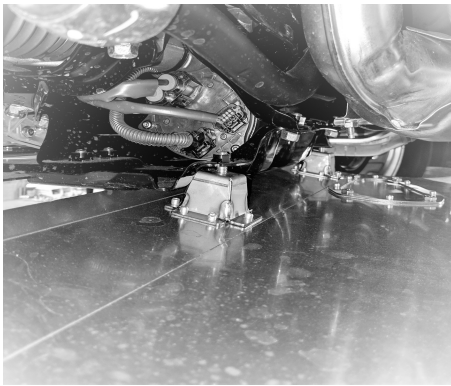
Included Parts:

- ✓ 1x - Primitive Racing 2019+ Forester Front Skidplate
- ✓ 4x - M8-1.25x20mm JIS Flange Bolt

1. Remove packaging and any protective wrapping from the new Skidplate and do a quick inventory of the hardware and verify it matches this sheet, then raise the car securely on jack stands, ramps or a lift if you're fancy.
2. Remove the front plastic splash shield, it's attached with 11 large push clips and qty: 4 - 12mm headed bolts. You will need to re-install 6 of the large plastic clips, do this before moving onto the next step.



3. Thread two of the M8x20mm JIS Flange bolts into the rearward location where you removed two of the 12mm headed bolts that held the stock splash shield onto the car. Thread the bolts in about 3 turns.



4. With the front edge of the plate angled down position the slots in the rear mounting towers over the rear mounting bolts, this will allow the plate to be hooked over the mounting bolts and hang without the need to hold it up. Make sure to not pull forward on it too much or it will come off the bolt heads and fall down.

5. Push the front of skidplate up to align the front mounting towers with the factory mounting points, use the two remaining M8-1.25x20mm JIS Flange bolts to attach the skidplate. Tighten all 4 of the bolts down and torque them to 11-14 ft/lbs. If you live in an area where cars are prone to rusting some anti-seize is recommended.

