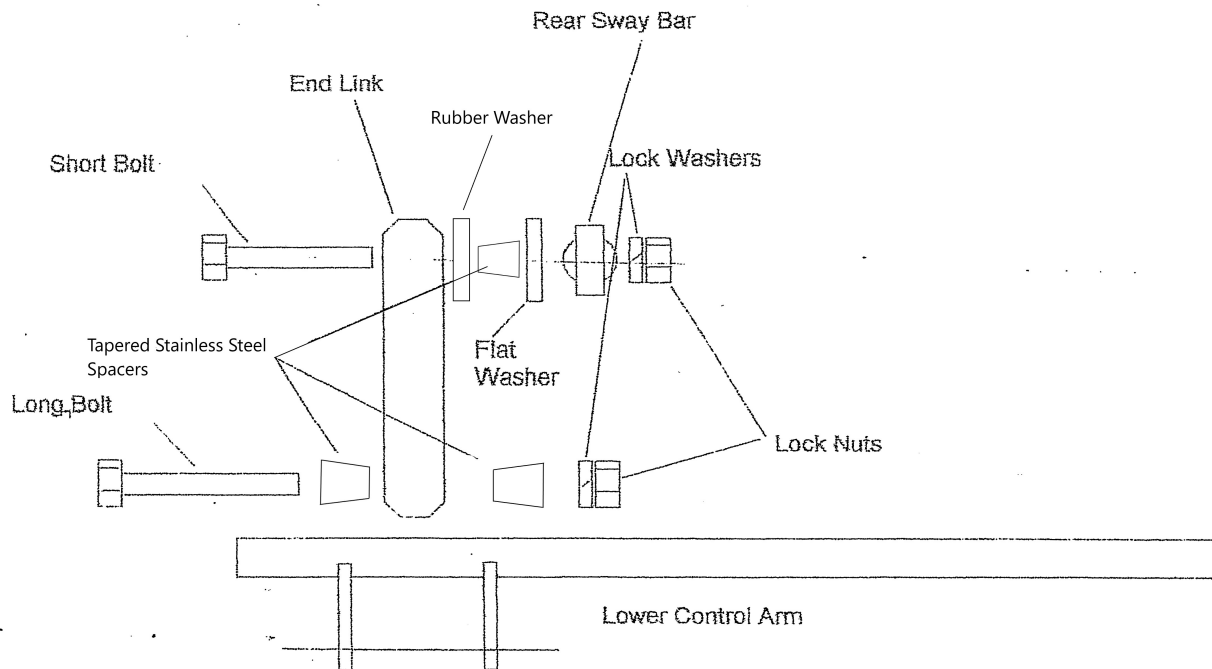


Primitive Rear Sway Bar End Link Installation

WARNING! Always use proper wheel chocks, vehicle stands, and floor jacks when working under a vehicle larger than a Tonka truck.

Installation Diagram



- 1) Remove stock rear end link.
- 2) Install lower two spacers and long bolt to lower control arm.
- 3) Swing end link up and install short bolt, spacer and rubber washer to sway bar.
- 4) Install lock washers and lock nuts.
- 5) Torque lock nuts to 32 foot-pounds.
- 6) Check for interference through full suspension travel. Make sure there is no binding or contact with stock sway bars.