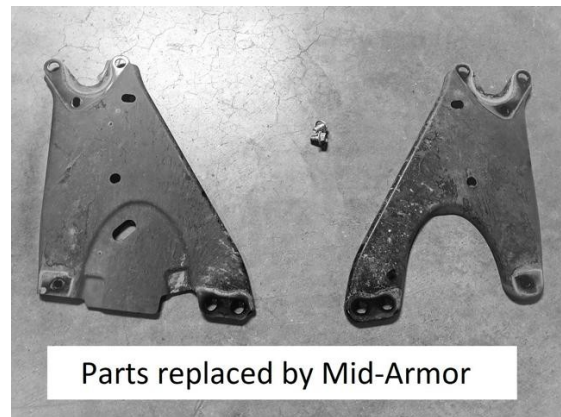
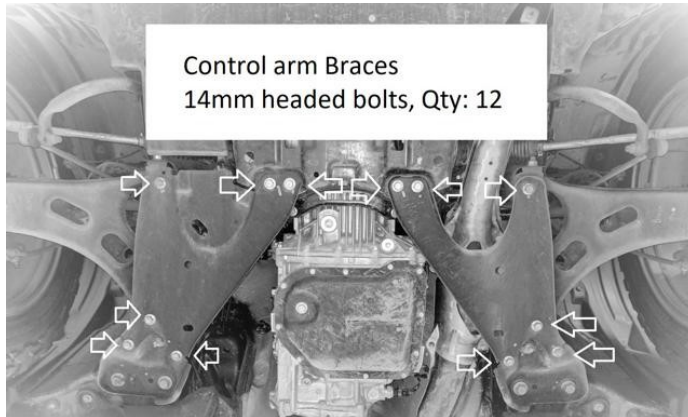


Instructions for Mounting Primitive™ Mid-Armor Skidplate for: 2018+ Subaru Crosstrek & 2019+ Forester.

1. Remove the Skidplate from Packaging and then raise the car securely on jack stands or ramps.
2. Remove the control arm braces, the Mid-Armor will take the place of these braces and 2 of the bolts will be leftover, see images below.



3. Hold the plate up and loosely install the plate using 10 of the 12 bolts removed during step 2, once all the bolts are installed tighten them all to 22-33 ft/lbs. Enjoy!



www.get-primitive.com